

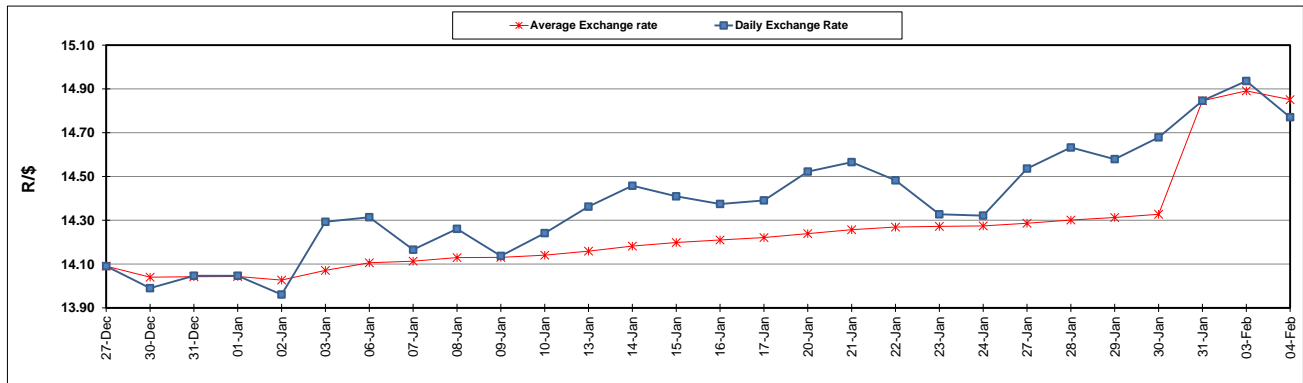
	PETROL 95 ULP	PETROL 93 ULP & LRP	DIESEL 0.05%	DIESEL 0.005%	ILL. PAR.
GAUTENG PUMP PRICE (SA c/l) AS FROM 05/02/2020	1,603.000	1,571.000	-	-	-
WHOLESALE PRICE (SA c/l) AS FROM 05/02/2020	-	-	1,457.260	1,462.660	924.728
SINGLE NATIONAL MAXIMUM RETAIL PRICE	-	-	-	-	1,176.000
BASIC FUEL PRICE - 04/02/2020 (SA c/l)	656.066	644.790	674.144	679.514	659.573
PRESS RELEASE CONTRIBUTION TO BFP 31/01/2020 - 04/02/2020 (SA c/l)	699.970	677.970	742.630	748.030	737.128
UNIT OVER/(UNDER) RECOVERY - 04/02/2020 (SA c/l)	43.904	33.180	68.486	68.516	77.555
AVERAGE BASIC FUEL PRICE 31/01/2020 - 04/02/2020	663.678	652.398	677.648	683.007	665.738
AVERAGE UNIT OVER/(UNDER) RECOVERY 31/01/2020 - 04/02/2020	36.292	25.572	64.982	65.023	71.390

ANALYSIS MOVEMENT OF AVERAGE OVER/(UNDER) RECOVERY

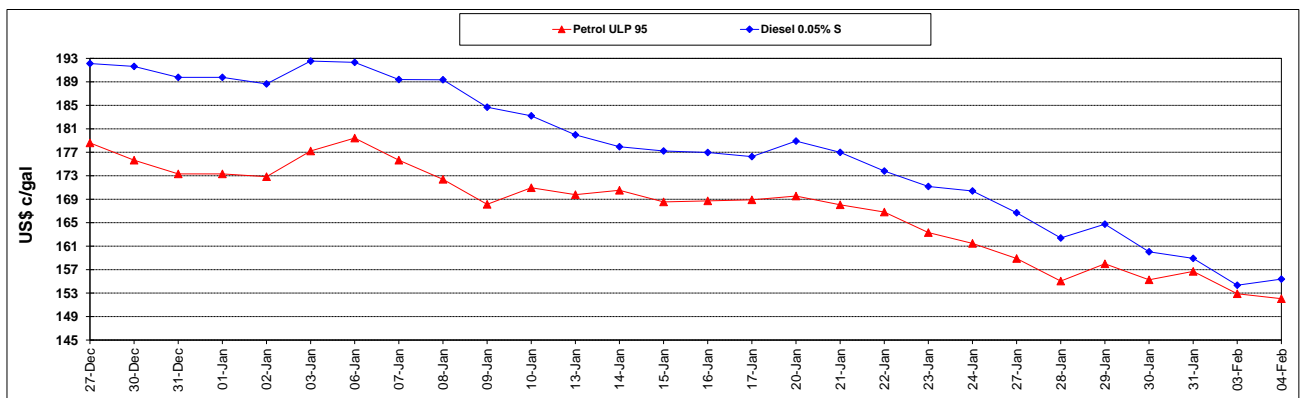
	PETROL 95	PETROL 93	DIESEL 0.05%	DIESEL 0.005%	ILL. PAR.
- MOVEMENT IN INTERNATIONAL PRODUCT PRICES	59.682	48.565	88.865	89.095	94.853
- MOVEMENT IN EXCHANGE RATE	(23.390)	(22.993)	(23.883)	(24.072)	(23.463)
AVERAGE UNIT OVER/(UNDER) RECOVERY 31/01/2020 - 04/02/2020	36.292	25.572	64.982	65.023	71.390

R/\$ EXCHANGE RATE - (R/\$14.7708 - 04/02/2020)

EXCHANGE RATE USED IN BASIC FUEL PRICE



INTERNATIONAL PRODUCT PRICES OF BASKET USED IN BASIC FUEL PRICE



BASIC FUEL PRICE IN SA CENTS PER LITRE

